



# SENSOR, CONTROL AND IOT SOLUTIONS FOR BETTER SPACES

# HIGH QUALITY LIGHTING + IOT SENSORS

# A WORLD OF BENEFITS

Connected lighting opens up a world of opportunities for smart buildings by integrating lighting and information systems. However, real savings and benefits can be achieved by pairing a sensor with every light fitting.

## A sensor per luminaire advantage

### Timely movement detection

Having just one sensor in the roof runs the risk of it being obstructed and not turning on in time for someone entering the room or off when they leave.

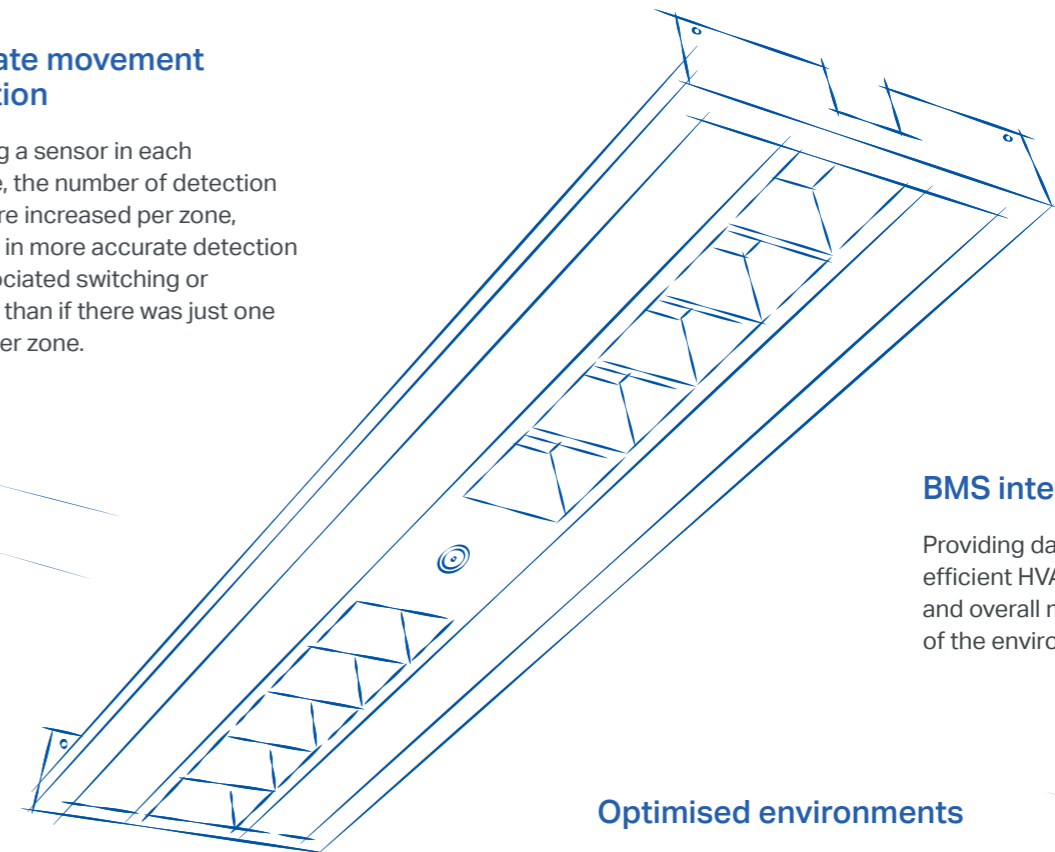
A sensor within each luminaire ensures even coverage and timely activation.

### Lower total installation costs

Our sensors are pre-installed into our luminaires, which reduces the number of installation points, wiring complexity and installation labour time, to minimise total installation costs.

### Accurate movement detection

By having a sensor in each luminaire, the number of detection beams are increased per zone, resulting in more accurate detection and associated switching or dimming than if there was just one sensor per zone.



### BMS integration

Providing data for more efficient HVAC control and overall monitoring of the environment.

### Optimised environments

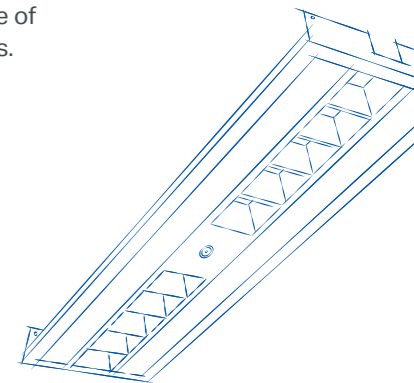
Having one sensor per luminaire allows for flexible and optimal design solutions to suit a range of occupancy patterns and needs.

### Environment monitoring and WELL building standard

Monitors the environment including CO2, TVOC, pressure, humidity and sound for maintaining WELL compliance and reporting.

### Effective use of power

Individual sensors per luminaire ensure that each light fitting is only powered up or dimmed when it is supposed to, resulting in the best possible energy savings.



# UNLOCK THE VALUE OF SMART BUILDINGS

As the demand for buildings that make their occupants healthier, happier and more productive increase, so too do the targets for wellness and sustainability criteria, including the WELL building standard, Nabers, Greenstar and NCC J6.

With a combination of best-in-class luminaires, smart sensors and world-leading Internet of Things (IoT) technology providers, Pierlite Connect's new generation of smart building solutions delivers customers with greater control and advanced data analytics.

Using these data insights, customers are able to optimise their buildings and working environments through increased safety and wellbeing benefits and decreased energy costs.



## Actionable Intelligence

- BMS Intergration
- Customizable API (Application Programming Interface)
- Geographically distributed assets
- Event workflows



## Wellness

- Human Centric Lighting
- WELL Building Standard Compliance



## Compliance

- NCC Section J6
- Greenstar
- NABERS



## Energy Saving

- Daylight Harvesting
- Energy monitoring
- Dimming and powering up depending on occupancy



## Facility Optimisation

- Occupancy sensing
- Complex lighting scenes
- People counting
- Asset tracking
- Turnkey end to end engineered solution
- Occupant satisfaction

# WORKPLACES THAT WORK BETTER

From increased productivity to lower overhead costs, Pierlite Connect allows you to create work environments of the future.

Our connected, intelligent lighting platform delivers better data, which gives you better insights to realise the full potential of your assets, environments, and people.

## Key Benefit Areas

### Lighting

- Seamlessly integrated quality Pierlite luminaires with the added smarts of world class IoT solutions providers
- Daylight harvesting and occupancy sensors ensure lights can switch and dim, providing illumination where and when it is required
- Human Centric Lighting can contribute to the overall wellbeing and productivity of a workforce

### Safety

- If emergency exit is needed, real time data can give an overview of evacuation status
- Co2 sensors can trigger alarms if the air becomes unsafe

### Climate

- Insight into the office space to allow for effective usage of HVAC, reducing costs
- Monitor one of the largest contributors to productivity in workplaces, indoor air quality. In particular - temperature, humidity, Co2 and ambient sound

### Security

- Access seamless security with effective wayfinding and people traffic management
- Presence detection in real time enables reporting via SMS, email or other notifications
- Enhances the effectiveness and insight of building security resources

### Utilisation

- View trends and data around usage of meeting rooms, breakout areas, and office spaces to then optimize
- Monitor waiting times and productivity loss with realtime information
- Responsive switching and dimming enables energy to be delivered

# ENVIRONMENTS THAT ARE HEALTHIER

Our connected lighting platform delivers healthcare providers with advanced data insights to help them optimise their environments, from improving patient outcomes through to mitigating risks.

## Key Benefit Areas

### Asset Monitoring

- Easy tracing and recovery of assets saves staff time
- Asset temperature monitoring can result in increased safety thanks to real-time alerts
- Protection of high-use devices from overheating and breakdowns

### People Tracking

- Centralized remote monitoring saves staff resources
- Automatically identify high traffic to allocate extra staff, increase security, boost housekeeping
- Prevent the risk of patients injuring themselves or getting lost

### Light & Energy

- Reduce staff errors with adequate lighting conditions
- Optimize energy consumption across the building
- Help patients keep normal sleeping patterns while in hospital with circadian-based lighting
- Gain full visibility into energy consumption

### Air Quality & Microclimate

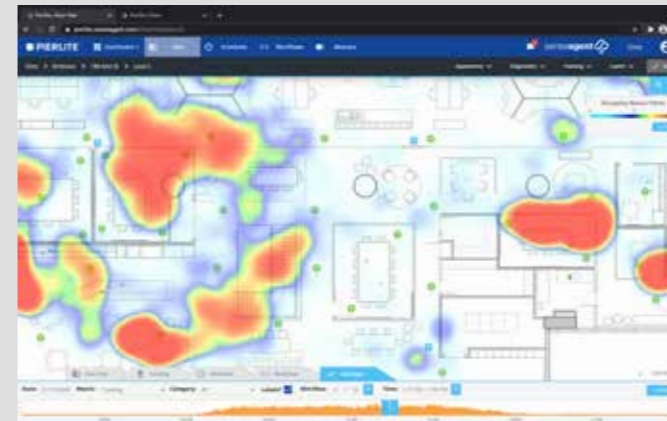
- Identify major contaminant sources and timely address issues
- Accommodate different temperature preferences of patients
- Additional monitoring in positive / negative pressure areas for potential leaks

### Outbreak control

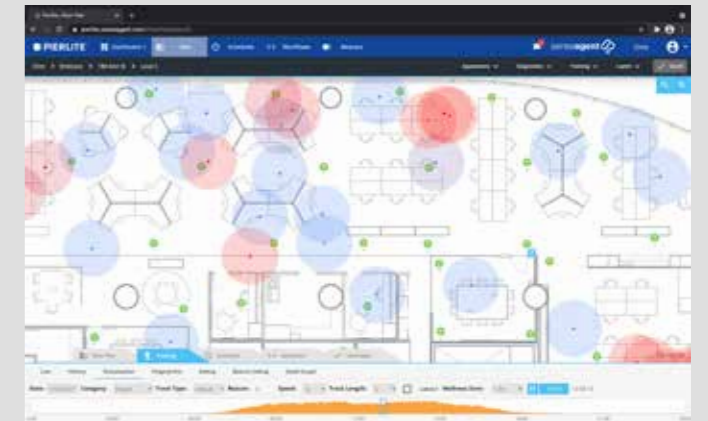
- Monitor social distancing for increased visitor and staff safety
- Assists with contact tracing for accurate tracking of interactions with historical data and reports available within minutes

# ON-DEMAND ACTIONABLE DATA

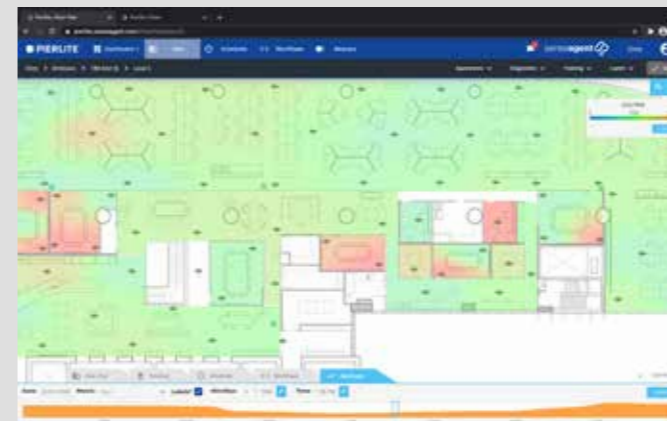
At the heart of our connected lighting platform is actionable data from each sensor that is pushed securely to the cloud for storage, analysis and visualisation. The outcome is a geographically distributed building map that gives context to the data and can be grouped into organisation, site, building, floor plan and room via a smart dashboard. Event workflows can be monitored, controlled, scheduled and programmed or sent to third party applications.



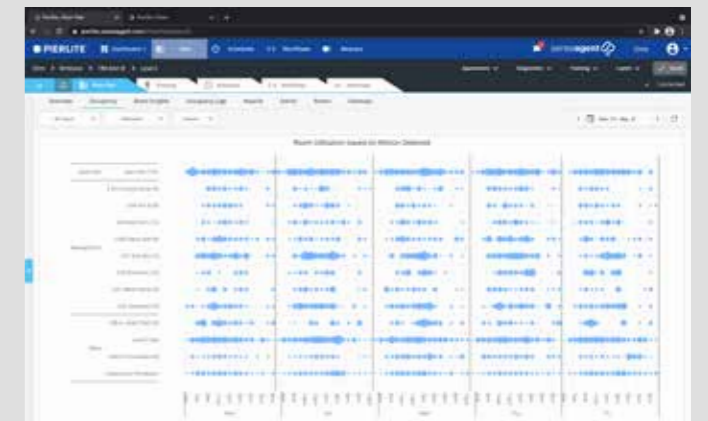
Occupancy Beacon Points



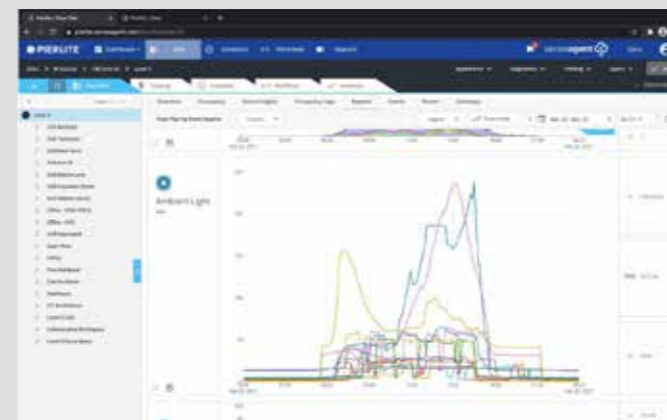
COVID Safe Social Distancing



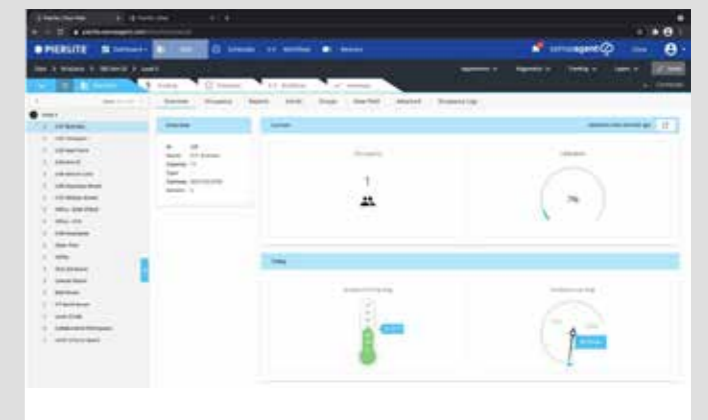
CO<sub>2</sub> Heatmap



Room Utilisation based on Motion Detection



Ambient Lighting



Occupancy Utilisation

The logo for PIERLITE CONNECT, featuring a stylized white circle with a vertical line through it to the left of the text "PIERLITE" and "CONNECT" stacked vertically in a bold, white, sans-serif font.

# PIERLITE<sup>®</sup> CONNECT

---

Powered by

**enlighted**<sup>™</sup>  
A Siemens Company

senseagent 

[pierlite.com.au/connect](http://pierlite.com.au/connect)

A background graphic consisting of a dark blue field with a network of white lines and nodes. The nodes are small white circles, and the lines connect them in a grid-like pattern, with some lines extending vertically from the bottom nodes to the top nodes.